

Fords.

SALES | LETTINGS | NEW HOMES

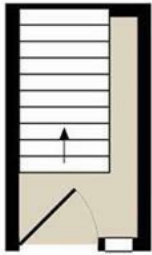


Flat 5, Clifton Court Marlow Road, High Wycombe, HP11 1TE

A two double bedroom duplex apartment located in the popular area of Cressex - available from March 2026

- Spacious Sitting Room
- Rear Balcony
- Gas Central Heating
- Duplex Apartment
- Residents Parking
- Communal Gardens
- Two Double Bedrooms
- Close Proximity M40 Motorway
- Close Proximity to Schools
- Available from March 2026

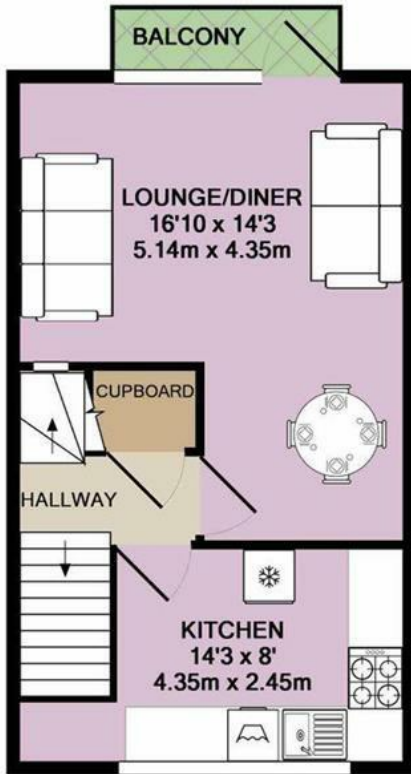
£1,550 Per month



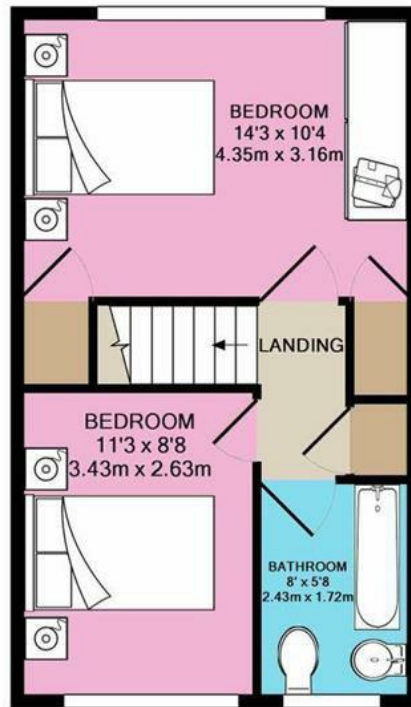
GROUND FLOOR
APPROX. FLOOR
AREA 40 SQ.FT.
(3.7 SQ.M.)

TOTAL APPROX. FLOOR AREA 749 SQ.FT. (69.6 SQ.M.)

Whilst every attempt has been made to ensure the accuracy of the floor plan contained here, measurements of doors, windows, rooms and any other items are approximate and no responsibility is taken for any error, omission, or mis-statement. This plan is for illustrative purposes only and should be used as such by any prospective purchaser. The services, systems and appliances shown have not been tested and no guarantee as to their operability or efficiency can be given
Made with Metropix ©2019



1ST FLOOR
APPROX. FLOOR
AREA 355 SQ.FT.
(33.0 SQ.M.)



2ND FLOOR
APPROX. FLOOR
AREA 354 SQ.FT.
(32.8 SQ.M.)

Energy Efficiency Rating		Current	Potential
Very energy efficient - lower running costs			
(92 plus) A			
(81-91) B			
(69-80) C			
(55-68) D			
(39-54) E			
(21-38) F			
(1-20) G			
Not energy efficient - higher running costs			
England & Wales		67	
	EU Directive 2002/91/EC		

Environmental Impact (CO ₂) Rating		Current	Potential
Very environmentally friendly - lower CO ₂ emissions			
(92 plus) A			
(81-91) B			
(69-80) C			
(55-68) D			
(39-54) E			
(21-38) F			
(1-20) G			
Not environmentally friendly - higher CO ₂ emissions			
England & Wales			
	EU Directive 2002/91/EC		

